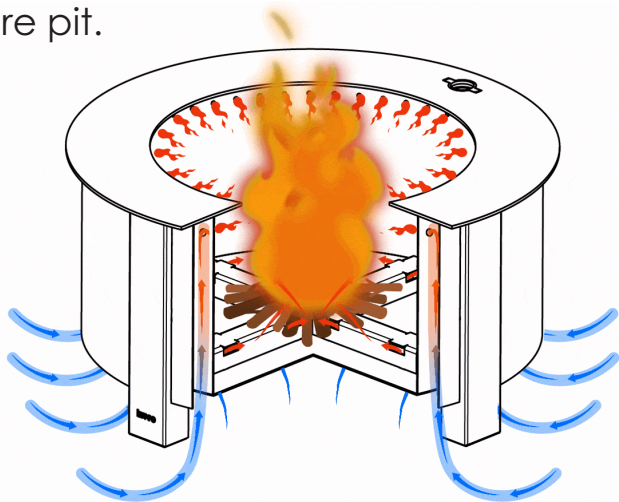




breeo
Become a Firemaster!

Here at Breeo, we are passionate about bringing people together through fire and food. With our handcrafted, American-made, and lifetime-warrantied fire pits, you will have the tools needed to become a Firemaster, someone who has the ability to build beautiful fires and to cook epic meals over those open flames. All of our fire pits are built with the same secondary combustion technology that we pioneered almost 10 years ago, allowing you to enjoy smokeless fires all year round.

Our newest product line, the Phoenix, is designed to be just as legendary as the ancient mythical bird rising from the ashes in a blaze of glory. Designed for the backyard grillmaster, it's the only fire pit with our patent-pending Sear Plate. With the ability to sear steaks at 1,000 degrees, a patent-pending post lock system, and optional accessories including a newly redesigned grill and kettle hook, the Phoenix Fire Pit™ is the grilling experience of a lifetime, as well as an epic backyard fire pit.



BUY A BREED,
BECOME A FIREMASTER!





Phoenix 19 Inch Fire Pit™

Inside Diameter: 19"
Outside Diameter: 23.5"
Height: 15"
Weight: 56 lbs.

Outer Ring: COR-TEN Steel
Legs: 304 Stainless Steel
Sear Plate: 304 Stainless Steel



Introducing the PHOENIX Fire Pit™

Phoenix 24 Inch Fire Pit™

Inside Diameter: 24"
Outside Diameter: 29.5"
Height: 15"
Weight: 78 lbs.

Outer Ring: COR-TEN Steel
Legs: 304 Stainless Steel
Sear Plate: 304 Stainless Steel



Double Flame 19 Inch

Inside Diameter: 19"

Outside Diameter: 22"

Height: 16"

Weight: 48 lbs.

Material: 304 Stainless Steel

Double Flame 24 Inch

Inside Diameter: 24"

Outside Diameter: 27"

Height: 15"

Weight: 57 lbs.

Material: 304 Stainless Steel

OR Cold-rolled Steel,

Painted Black



**ADD THE OPTIONAL GRILL
ACCESSORY FOR EVEN
MORE COOKING FUN!**

DOUBLE FLAME

Smokeless Fire Pit

The Double Flame Fire Pits were designed as a smaller, more portable option for those campfire enthusiasts on the go. Although it remains very heavy-duty, we've designed this fire pit in two different sizes; the Double Flame 19" is perfect for the RV or campsite, while the Double Flame 24" is perfect for the backyard and the occasional transport to the cabin or beachfront! Our Double Flame Fire Pit is one of our top-rated and most popular smokeless fire pits, try one today!



The original Breeo fire pit, the Ablaze won the Best-In-Show Vesta Awards in 2014 with Hearth & Home magazine. A free standing, heavy-duty fire pit, the Ablaze is designed to be both a fire pit and a grill. Attach one of the optional add-on Breeo grilling accessories and watch as your friends and family stand in awe of the Firemaster before them! Built with heavy gauge steel and painted with a high-temperature outdoor coating, the Ablaze feels right at home at a cabin or in the backyard.



ABLAZE

Smokeless Fire Pit





Ablaze 24 Inch

Inside Diameter: 24"

Outside Diameter: 34"

Height: 16.5"

Weight: 101 lbs.

Material: Steel, Painted Black

TURN YOUR BACKYARD FIRE
PIT INTO A WOOD-FIRED
KITCHEN WITH ONE OR
MORE OF THE OPTIONAL
ADD-ON ACCESSORIES!



Luxeve 24 Inch

Inside Diameter: 24"

Outside Diameter: 33"

Material: 304 Stainless Steel

Height: 15"

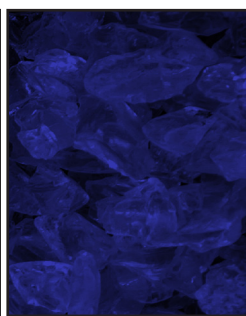
Weight: 135.5 lbs.



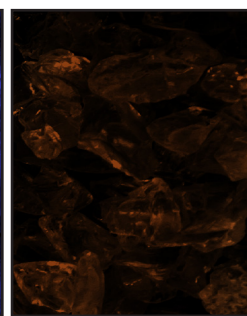
CHOOSE YOUR FIRE GLASS COLOR:



Black



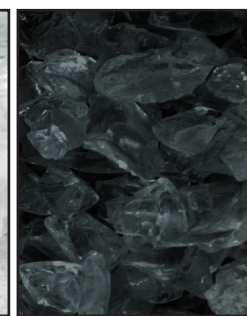
Blue



Brown



Clear



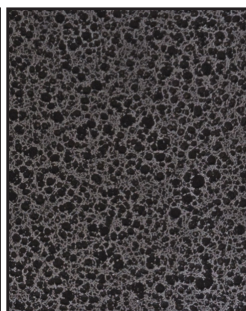
Gray



CHOOSE YOUR OUTER WALL COLOR:



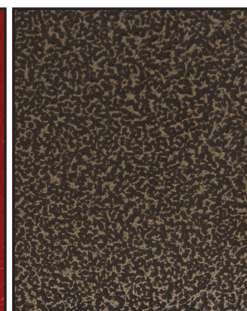
Stainless Steel



Silver Vein



Red River



Bronze Vein



White River



Earth Rust

Modern & elegant with clean lines and an air of sophistication, the Luxeve fire pit brings class to the world of wood-burning fire pits. Designed in stainless steel with a powder-coated exterior wall and colorful fire pit glass around the rim, the Luxeve allows you to create your own unique look. Designed for use on patios and outdoor spaces all across the country, the Luxeve is a beautiful campfire experience.

LUXEVE

Smokeless Fire Pit



ZENTRO *Smokeless Fire Pit Insert*

Designed for the patio enthusiast, our line of Zentro products are designed to accommodate any type of block, stone, or concrete backyard fire pit surround! We offer three Zentro fire pit sizes that fit almost any size fire pit surround. Installation time needed to turn your smoky block fire pit into an efficiently burning & beautiful centerpiece is less than a minute. No assembly is required, simply drop your Zentro unit into the top of your surround. Attach any of the optional add-on Breeo grilling accessories to your Zentro and cook an epic meal, then remove, and settle in for a long evening of relaxing around your smokeless fire!





Zentro 24 Inch:
Fits into 30"- 33" Inside
Diameter of Block, Paver, or
Stone Surround
Seating Estimate: 8-9 People

Zentro 28 Inch:
Fits into 34"- 37" Inside
Diameter of Block, Paver, or
Stone Surround
Seating Estimate: 9-10 People



**AVAILABLE IN 2 SHAPES,
3 SIZES, & 2 MATERIALS!**

Zentro 32 Inch:
Fits into 38"- 41" Inside
Diameter of Block, Paver, or
Stone Surround
Seating Estimate: 10-11 People

**All 3 sizes are available in
Steel Painted Black or 304
Stainless Steel and in
Square or Round.**

MASONRY SURROUND KIT

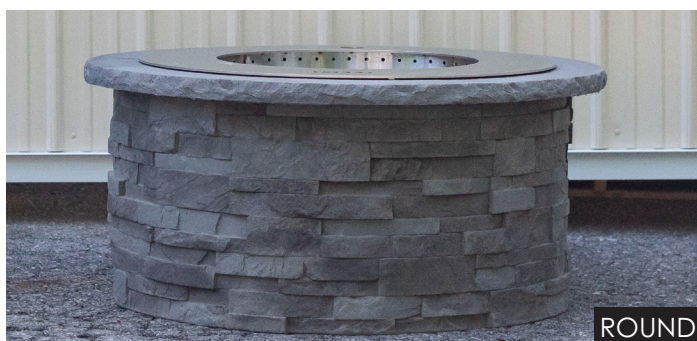
As Easy as 1, 2, 3!

The Masonry Surround Kits are designed for the Round & Square Zentro 24" Smokeless Fire Pit Inserts. These kits are constructed with precast panels made from fiber-reinforced polymeric concrete mix, that look like real stone. Installation is simple and can be done quickly with 1-3 persons. Upon construction, each kit measures 19.5" tall and has an outside diameter of 44". These American-made kits are an excellent option for those looking for a simple DIY fire pit surround solution.



CHOOSE YOUR SHAPE:

ONE:



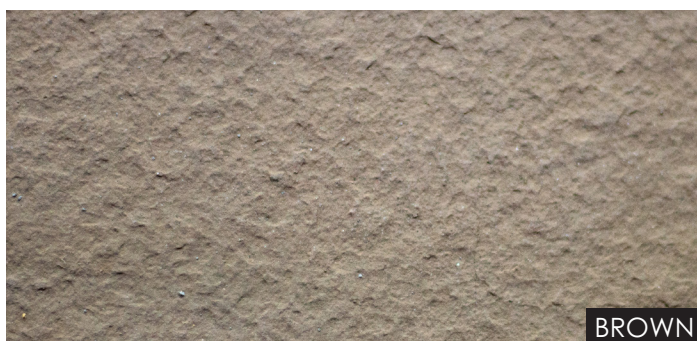
ROUND



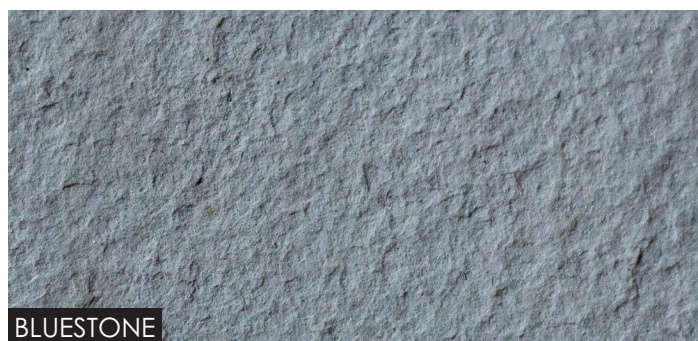
SQUARE

CHOOSE YOUR TOP CAP COLOR:

TWO:



BROWN



BLUESTONE

CHOOSE YOUR WALL COLOR & TEXTURE:

THREE:



NY BLUESTONE
STACKED STONE



NY BLUESTONE
LEDGE STONE



BISCOTTI TAN
STACKED STONE



BISCOTTI TAN
LEDGE STONE



**ZENTRO 24" ROUND SMOKELESS FIRE PIT INSERT WITH LID
ZO-24SLFP OR ZO-24SLFP-SS**

- Fits into 30"- 33" Inside Diameter of Fire Surround
- Inside Diameter: 24"
- Top Flange Outside Diameter: 35"
- Height: 12"
- Weight (Steel): 99 lbs.
- Weight (Stainless Steel): 105 lbs.



**ZENTRO 24" SQUARE SMOKELESS FIRE PIT INSERT WITH LID
ZO-24SLFP-SQ OR ZO-24SLFP-SQ-SS**

- Fits into 30"- 33" Inside Dimensions of Fire Surround
- Inside Dimensions: 24"x24"
- Top Flange Outside Dimensions: 35"x35"
- Height: 12"
- Weight (Steel): 124 lbs.
- Weight (Stainless Steel): 130 lbs.



**ZENTRO 28" ROUND SMOKELESS FIRE PIT INSERT WITH LID
ZO-28SLFP OR ZO-28SLFP-SS**

- Fits into 34"- 37" Inside Diameter of Fire Surround
- Inside Diameter: 28"
- Top Flange Outside Diameter: 39"
- Height: 12"
- Weight (Steel): 120 lbs.
- Weight (Stainless Steel): 127 lbs.

**ZENTRO 28" SQUARE SMOKELESS FIRE PIT INSERT WITH LID
ZO-28SLFP-SQ OR ZO-28SLFP-SQ-SS**

- Fits into 34"- 37" Inside Dimensions of Fire Surround
- Inside Dimensions: 28"x28"
- Top Flange Outside Dimensions: 39"x39"
- Height: 12"
- Weight (Steel): 150 lbs.
- Weight (Stainless Steel): 157 lbs.

**ZENTRO 32" ROUND SMOKELESS FIRE PIT INSERT WITH LID
ZO-32SLFP OR ZO-32SLFP-SS**

- Fits into 38"- 41" Inside Diameter of Fire Surround
- Inside Diameter: 32"
- Top Flange Outside Diameter: 43"
- Height: 12"
- Weight (Steel): 129 lbs.
- Weight (Stainless Steel): 136 lbs.

**ZENTRO 32" SQUARE SMOKELESS FIRE PIT INSERT WITH LID
ZO-32SLFP-SQ OR ZO-32SLFP-SQ-SS**

- Fits into 38"- 41" Inside Dimensions of Fire Surround
- Inside Dimensions: 32"x32"
- Top Flange Outside Dimensions: 43"x43"
- Height: 12"
- Weight (Steel): 171 lbs.
- Weight (Stainless Steel): 180 lbs.

COMPLETE THE COLLECTION:



Breeo 24"
Accessory Post
BR-24AP



Breeo 24"
Kettle Hook
BR-24KH



Breeo 24" Grill
BR-24GRL



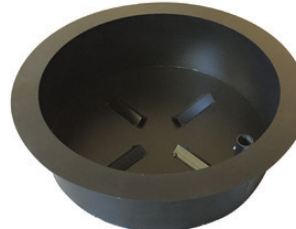
**ZENTRO 29" RING INSERT
ZO-29RI-SS**

- Stainless Steel
- Fits into 29.5"- 32" Inside Diameter
- Inside Diameter: 29"
- Weight: 24 lbs.



**ZENTRO 29" RING INSERT
ZO-29RI**

- Steel
- Fits into 29.5"- 32" Inside Diameter
- Inside Diameter: 29"
- Weight: 24 lbs.



**ZENTRO 29" BASIC FIRE PIT
ZO-29BFP**

- Steel
- Fits into 29.5"- 32" Inside Diameter
- Inside Diameter: 29"
- Weight: 50 lbs.



**ZENTRO 29" LID
ZO-29LD-SS OR ZO-29BRDL**

- Fits Zentro 29" Ring Insert & Zentro 29" Basic Fire Pit
- Stainless Steel or Steel
- Weight: 20 lbs.



ABLAZE 24" SMOKELESS FIRE PIT WITH LID

AB-24SLFP

- Seating Estimate: Approx. 8-9 people
- Lid Included
- Designed for the outdoor chef

COMPLETE THE COLLECTION:



Ablaze
Accessory Post
AB-24AP



Ablaze Kettle
Winch
AB-24KW



Ablaze Grill
AB-24GRL



DOUBLE FLAME 24" SMOKELESS FIRE PIT

DF-24SLFP

- Seating Estimate: Approx. 8-9 people
- Lid Sold Separately
- Designed for Portability

COMPLETE THE COLLECTION:



Double Flame 24"
Lid - Steel
DF-24LD



Double Flame 24"
Lid - Stainless Steel
DF-24LD-SS



Double Flame 24"
Grill & Post
DF-24GRL



DOUBLE FLAME 19" SMOKELESS FIRE PIT WITH LID

DF-19SLFP

- Seating Estimate: Approx. 6-7 people
- Lid Sold Separately
- Designed for Portability

COMPLETE THE COLLECTION:



Double Flame 19" Lid
DF-19LD



Breeo 19"
Accessory Post
BR-19AP



Breeo 19" Grill
BR-19GRL



LUXEVE 24" SMOKELESS FIRE PIT WITH LID

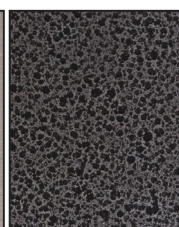
LU-24SLFP

- Seating Estimate: Approx. 8-9 people
- Includes 1 13lb. bag of fire glass (see pg. 10 for color options)
- Lid Included

AVAILABLE OUTER RING COLORS:



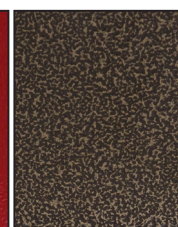
Stainless Steel



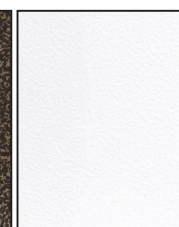
Silver Vein



Red River



Bronze Vein



White River



Earth Rust



PHOENIX 24" SMOKELESS FIRE PIT

PX-24SLFP

- Seating Estimate: Approx. 8-9 people
- The Ultimate Grilling Fire Pit
- New patent-pending X Airflow™

COMPLETE THE COLLECTION:



Breeo 24"
Accessory Post
BR-24AP



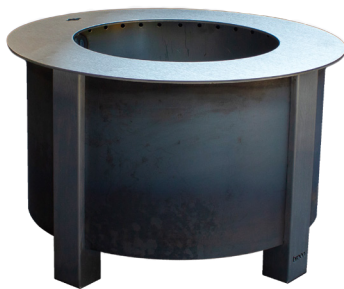
Breeo 24" Grill
BR-24GRL



Breeo 24"
Kettle Hook
BR-24KH



Phoenix 24" Lid
Stainless Steel
PX-24LD



PHOENIX 19" SMOKELESS FIRE PIT

PX-19SLFP

- Seating Estimate: Approx. 6-7 people
- The Ultimate Grilling Fire Pit
- New patent-pending X Airflow™

COMPLETE THE COLLECTION:



Breeo 19"
Accessory Post
BR-19AP



Breeo 19" Grill
BR-19GRL



Breeo 19"
Kettle Hook
BR-19KH



Phoenix 19" Lid
Stainless Steel
PX-19LD



BREEO 24" SPARK SCREEN BR-24SS

- 24" Diameter
- Stainless Steel
- For use with the Ablaze, Phoenix 24", & Zentro 24" Round Fire Pits ONLY



BREEO 29" SPARK SCREEN BR-29SS

- 29" Diameter
- Stainless Steel
- For use with the Zentro 28" Round Fire Pit ONLY



BREEO CAST IRON KETTLE BR-1380: 1 GALLON BR-1381: 1.5 GALLON BR-1382: 2.25 GALLON

- Lid Included
- Pre-Seasoned



BREEO ASH REMOVAL TOOL BR-24SS

- Stainless Steel
- For Use with All Breeo Fire Pits



BREEO LEATHER BBQ APRON BR-LAPN

- 100% Real Leather
- Adjustable Neck Strap
- 29" Long x 22.5" Wide



BREEO TRUCKER HAT BR-BLHT OR BR-WLHT

- Black or White
- Snapback Closure
- One Size Fits Most
- 100% Leather Patch

breeo

L L C

www.breeo.co • 800.413.9848 • info@breeollc.com

5002 Lincoln Highway
Kinzers PA 17535